

# \$285,900 - 4920 53 Avenue, Ryley

MLS® #E4425311

## \$285,900

5 Bedroom, 2.50 Bathroom, 1,451 sqft  
Single Family on 0.00 Acres

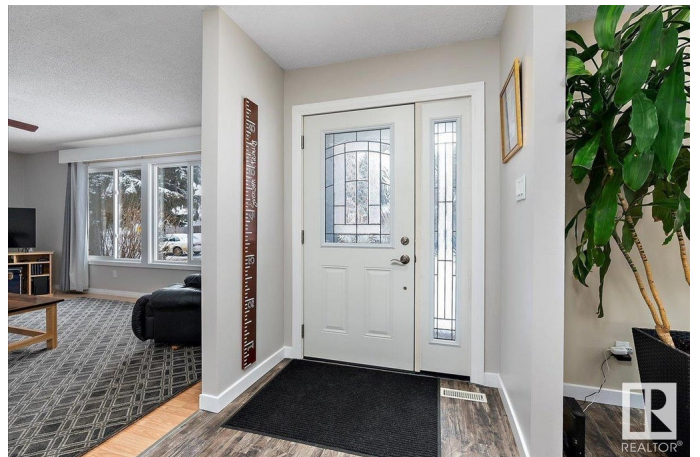
Ryley, Ryley, AB

Welcome to 4920 53av in the charming community of Ryley! 5 bedroom, 2 1/2 bathroom bungalow with breezeway & double detached garage on 100' x 140' lot! Open concept design of kitchen & dining area greets you upon entering this lovely home. Sunny living room with wood/coal fireplace, primary bedroom with double closets, 2nd & 3rd bedrooms, 4pc bathroom, office, and 2pc bathroom completes the main floor. Basement is fully finished with: huge, open family/rec room, 2 bedrooms, 3pc bathroom, cold room, and laundry. Recent upgrades: flooring, windows, furnace, backflow prevention valve (basement). Backyard is fully fenced and landscaped with large lawn area with play structure, fenced garden plot, and access for RV parking. Walking distance to recreational area, curling rink, and community hall. Great family home!

Built in 1976

### Essential Information

MLS® #	E4425311
Price	\$285,900
Bedrooms	5
Bathrooms	2.50
Full Baths	2
Half Baths	1



Square Footage	1,451
Acres	0.00
Year Built	1976
Type	Single Family
Sub-Type	Detached Single Family
Style	Bungalow
Status	Active

### **Community Information**

Address	4920 53 Avenue
Area	Ryley
Subdivision	Ryley
City	Ryley
County	ALBERTA
Province	AB
Postal Code	T0B 4A0

### **Amenities**

Amenities	Deck, Fire Pit
Parking	Double Garage Detached, Heated, Over Sized, RV Parking

### **Interior**

Appliances	Air Conditioning-Central, Dishwasher-Built-In, Dryer, Garage Control, Garage Opener, Microwave Hood Fan, Refrigerator, Storage Shed, Stove-Gas, Washer, Window Coverings
Heating	Forced Air-1, Natural Gas
Stories	2
Has Basement	Yes
Basement	Full, Finished

### **Exterior**

Exterior	Wood, Composition
Exterior Features	Back Lane, Fenced, Landscaped, Schools, Vegetable Garden, See Remarks
Roof	Asphalt Shingles
Construction	Wood, Composition
Foundation	Concrete Perimeter

### **School Information**

Elementary	Ryley
------------	-------

Middle	Ryley
High	Tofield

### **Additional Information**

Date Listed	March 12th, 2025
Days on Market	2
Zoning	Zone 80

DATA IS DEEMED RELIABLE BUT IS NOT GUARANTEED ACCURATE BY THE REALTORS® ASSOCIATION OF EDMONTON. COPYRIGHT 2025 BY THE REALTORS® ASSOCIATION OF EDMONTON. ALL RIGHTS RESERVED. Trademarks are owned or controlled by the Canadian Real Estate Association (CREA) and identify real estate professionals who are members of CREA (REALTOR®, REALTORS®) and/or the quality of services they provide (MLS®, Multiple Listing Service®)

Listing information last updated on March 14th, 2025 at 10:03am MDT