

\$928,888 - 3439 West Landing Landing, Edmonton

MLS® #E4423263

\$928,888

5 Bedroom, 4.00 Bathroom, 3,117 sqft
Single Family on 0.00 Acres

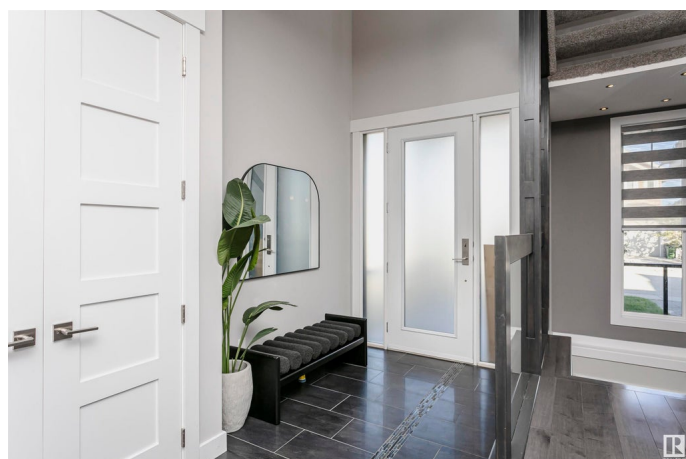
Windermere, Edmonton, AB

Welcome Home! This stunning 5-bedroom, 4-bath Executive two-story home features an inviting open layout. Step through the front door into a spacious kitchen and a living room highlighted by a beautiful tiled fireplace. The main level also includes a large dining room, a bedroom, a 3-piece bathroom, and a well-sized mudroom with pantry access from the double attached garage. Upstairs, enjoy a generous family room (bonus room) and an impressive primary suite with a 5-piece ensuite and a large walk-in closet. Two additional bedrooms, each with walk-in closets, share a stylish 4-piece bathroom, along with a convenient laundry room. The basement is an ideal retreat, featuring a gym, a large recreation room with a bar, a 4-piece bathroom, and a spacious bedroom with a walk-in closet. This home seamlessly blends luxury and functionality in one of Edmonton's most desirable neighbourhoods.

Built in 2012

Essential Information

| | |
|------------|-----------|
| MLS® # | E4423263 |
| Price | \$928,888 |
| Bedrooms | 5 |
| Bathrooms | 4.00 |
| Full Baths | 4 |



| | |
|----------------|------------------------|
| Square Footage | 3,117 |
| Acres | 0.00 |
| Year Built | 2012 |
| Type | Single Family |
| Sub-Type | Detached Single Family |
| Style | 2 Storey |
| Status | Active |

Community Information

| | |
|-------------|---------------------------|
| Address | 3439 West Landing Landing |
| Area | Edmonton |
| Subdivision | Windermere |
| City | Edmonton |
| County | ALBERTA |
| Province | AB |
| Postal Code | T6W 0T4 |

Amenities

| | |
|-----------|---|
| Amenities | Air Conditioner, Bar, Closet Organizers, Deck, Detectors Smoke, Exercise Room |
| Parking | Double Garage Attached |

Interior

| | |
|-------------------|--|
| Interior Features | ensuite bathroom |
| Appliances | Air Conditioning-Central, Dishwasher-Built-In, Dryer, Garage Control, Garage Opener, Hood Fan, Oven-Built-In, Oven-Microwave, Refrigerator, Stove-Countertop Gas, Washer, Window Coverings |
| Heating | Forced Air-1, Natural Gas |
| Fireplace | Yes |
| Fireplaces | Tile Surround |
| Stories | 3 |
| Has Basement | Yes |
| Basement | Full, Finished |

Exterior

| | |
|-------------------|--|
| Exterior | Wood, Stone, Stucco |
| Exterior Features | Fenced, Golf Nearby, Landscaped, Schools, Shopping Nearby, See Remarks |
| Roof | Asphalt Shingles |

| | |
|--------------|---------------------|
| Construction | Wood, Stone, Stucco |
| Foundation | Concrete Perimeter |

School Information

| | |
|------------|--------------------------|
| Elementary | Constable Daniel Woodall |
| Middle | Riverbend School |
| High | Lillian(Lottery Process) |

Additional Information

| | |
|----------------|---------------------|
| Date Listed | February 28th, 2025 |
| Days on Market | 14 |
| Zoning | Zone 56 |
| HOA Fees | 160 |
| HOA Fees Freq. | Annually |

DATA IS DEEMED RELIABLE BUT IS NOT GUARANTEED ACCURATE BY THE REALTORS® ASSOCIATION OF EDMONTON. COPYRIGHT 2025 BY THE REALTORS® ASSOCIATION OF EDMONTON. ALL RIGHTS RESERVED. Trademarks are owned or controlled by the Canadian Real Estate Association (CREA) and identify real estate professionals who are members of CREA (REALTOR®, REALTORS®) and/or the quality of services they provide (MLS®, Multiple Listing Service®)

Listing information last updated on March 14th, 2025 at 10:32am MDT