

\$749,999 - 39 Avonlea Way, Spruce Grove

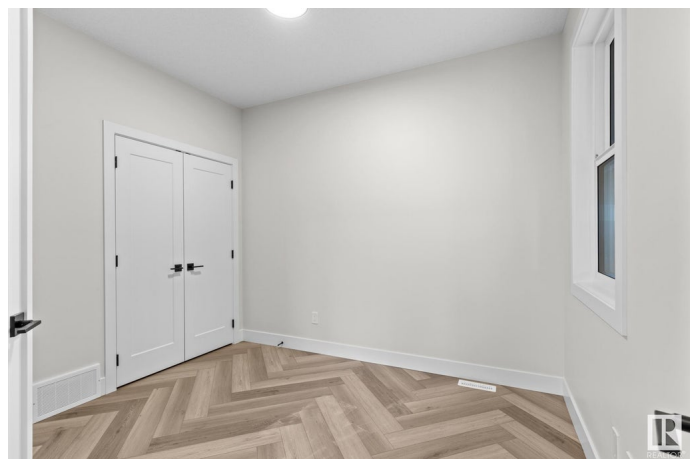
MLS® #E4417718

\$749,999

3 Bedroom, 3.00 Bathroom, 2,548 sqft
Single Family on 0.00 Acres

Jesperdale, Spruce Grove, AB

This stunning home in the highly sought-after community of Jesperdale seamlessly blends functionality with style, offering a living experience like no other. From the moment you arrive, the impressive 4-car garage and captivating curb appeal leave a lasting first impression. Inside, the versatile main-floor bedroom, conveniently located next to a full bathroom, offers endless possibilities—whether as a home office, playroom, or serene retreat. The gourmet kitchen is a chef’s dream, featuring premium finishes like herringbone LVP flooring, a generous island, and extended cabinetry that seamlessly flows into the dining area—ideal for hosting gatherings of any size. Upstairs, a cozy bonus room invites you to unwind, while three spacious bedrooms provide ample room for rest and relaxation. The luxurious master suite is a true retreat, complete with elegant tray ceilings, a spa-inspired ensuite, and a walk-in closet. Your new era of living begins here! Note house is under construction, exact finishes may vary.



Built in 2024

Essential Information

MLS® #	E4417718
Price	\$749,999

Bedrooms	3
Bathrooms	3.00
Full Baths	3
Square Footage	2,548
Acres	0.00
Year Built	2024
Type	Single Family
Sub-Type	Detached Single Family
Style	2 Storey
Status	Active

Community Information

Address	39 Avonlea Way
Area	Spruce Grove
Subdivision	Jesperdale
City	Spruce Grove
County	ALBERTA
Province	AB
Postal Code	T7X 0Y3

Amenities

Amenities	Ceiling 9 ft., Hot Water Tankless, See Remarks, HRV System, 9 ft. Basement Ceiling
Parking	Quad or More Attached

Interior

Interior Features	ensuite bathroom
Appliances	Garage Control, Hood Fan, Builder Appliance Credit
Heating	Forced Air-1, Natural Gas
Fireplace	Yes
Fireplaces	Mantel
Stories	2
Has Basement	Yes
Basement	Full, Unfinished

Exterior

Exterior	Wood, Stone, Vinyl
Exterior Features	Golf Nearby, Shopping Nearby
Roof	Asphalt Shingles

Construction Wood, Stone, Vinyl
Foundation Concrete Perimeter

Additional Information

Date Listed January 11th, 2025
Days on Market 62
Zoning Zone 91

DATA IS DEEMED RELIABLE BUT IS NOT GUARANTEED ACCURATE BY THE REALTORS® ASSOCIATION OF EDMONTON. COPYRIGHT 2025 BY THE REALTORS® ASSOCIATION OF EDMONTON. ALL RIGHTS RESERVED. Trademarks are owned or controlled by the Canadian Real Estate Association (CREA) and identify real estate professionals who are members of CREA (REALTOR®, REALTORS®) and/or the quality of services they provide (MLS®, Multiple Listing Service®)

Listing information last updated on March 14th, 2025 at 5:32pm MDT