

Courtesy Of Barry D Candelora Of MaxWell Polaris

## **\$265,000 - 113 10935 21 Avenue, Edmonton**

MLS® #E4407704

### **\$265,000**

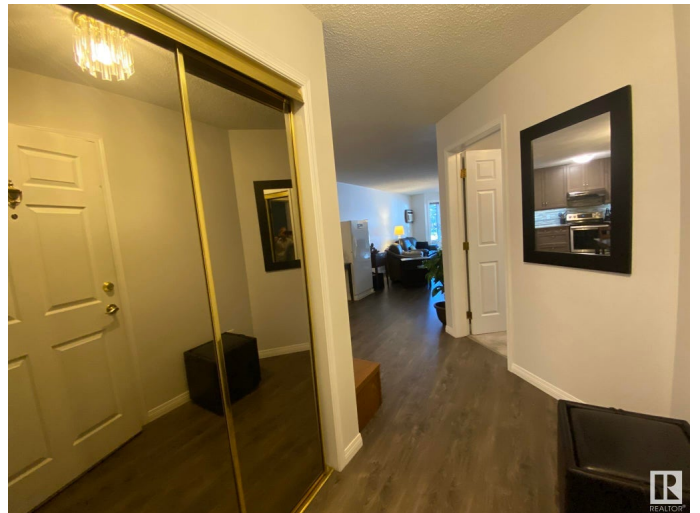
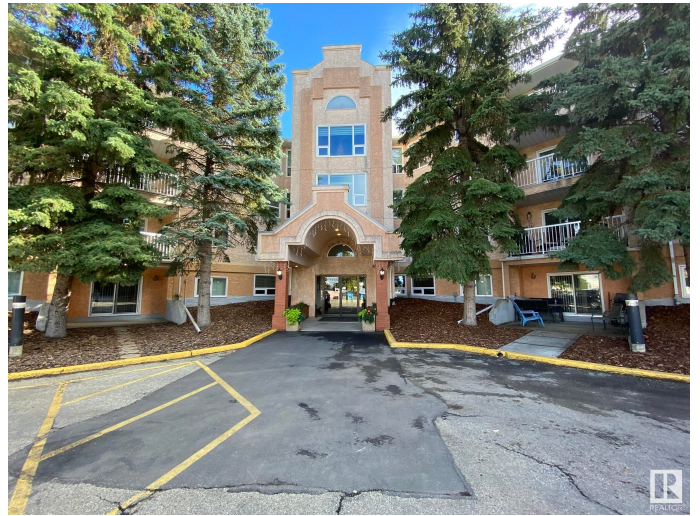
2 Bedroom, 2.00 Bathroom, 1,150 sqft  
Condo / Townhouse on 0.00 Acres

Keheewin, Edmonton, AB

Welcome to this 55+ West Facing 2Bdrms/2Full Bath UPGRADED & SECURE MAIN FLOOR Condo with 1150Sq.Ft. of Living Space, 1-Underground #4 STALL in "HERITAGE MANSION EAST!" The unit has newer VINYL PLANK Flooring into the large Living Room w/a BAY WINDOW & HUNTER DOUGLAS BLINDS w/a Lg Dining Room for 6+Guests & a newly upgraded kitchen with CABINETS TO THE CEILING, GRANITE COUNTER TOPS & BACKSPLASH with UNDERMOUNT LIGHTING & 4-S/S Appliances. The lg Primary Bdrm has space for a King Size Bed w/a WALK-IN CLOSET & a Full 3pc BATH w/a OPEN WALK-IN SHOWER! The Second Bdrm located on the other side of the unit next to the full 4pc Bath. And you have a lg Laundry Room w/a FRONT LOAD WASHER/DRYER with storage space. This Building has newer VINYL WINDOWS, CARPETING, PAINT BALCONIES & RAILINGS along w/an upgraded ELEVATOR. There is a main floor Library, Exercise Room, Craft Room, Top Floor Social Room & A WORKSHOP. Great location with walking to all Medical, Groceries, with ETS & 10min WALK TO THE CENTURY PARK LRT!

Built in 1992

### **Essential Information**



MLS® #	E4407704
Price	\$265,000
Bedrooms	2
Bathrooms	2.00
Full Baths	2
Square Footage	1,150
Acres	0.00
Year Built	1992
Type	Condo / Townhouse
Sub-Type	Lowrise Apartment
Style	Single Level Apartment
Status	Active

### Community Information

Address	113 10935 21 Avenue
Area	Edmonton
Subdivision	Keheewin
City	Edmonton
County	ALBERTA
Province	AB
Postal Code	T6J 6R3

### Amenities

Amenities	Air Conditioner, Closet Organizers, Detectors Smoke, Hot Water Natural Gas, Intercom, No Animal Home, No Smoking Home, Parking-Visitor, Secured Parking, Security Door, Social Rooms, Storage-In-Suite, Television Connection, Vinyl Windows, Workshop, Storage Cage
Parking Spaces	1
Parking	Front Drive Access, Heated, Shop, Stall, Underground

### Interior

Interior Features	ensuite bathroom
Appliances	Air Conditioner-Window, Dishwasher - Energy Star, Dryer, Garage Control, Garburator, Hood Fan, Refrigerator, Stove-Electric, Washer - Energy Star, Window Coverings
Heating	Baseboard, Hot Water, Natural Gas
# of Stories	4
Stories	1
Has Basement	Yes

Basement See Remarks

## Exterior

Exterior Wood, Brick, Stucco

Exterior Features Airport Nearby, Backs Onto Park/Trees, Fenced, Flat Site, Fruit Trees/Shrubs, Golf Nearby, Landscaped, Playground Nearby, Private Setting, Public Swimming Pool, Public Transportation, Schools, Shopping Nearby, Ski Hill Nearby, Treed Lot

Roof Asphalt Shingles

Construction Wood, Brick, Stucco

Foundation Concrete Perimeter

## School Information

Elementary KEHEEWIN/St.THERESA!

Middle D.S.MAC/VERON B!

High H.AINLAY/LS.LAUR!

## Additional Information

Date Listed September 24th, 2024

Days on Market 171

Zoning Zone 16

Condo Fee \$628

DATA IS DEEMED RELIABLE BUT IS NOT GUARANTEED ACCURATE BY THE REALTORS® ASSOCIATION OF EDMONTON. COPYRIGHT 2025 BY THE REALTORS® ASSOCIATION OF EDMONTON. ALL RIGHTS RESERVED. Trademarks are owned or controlled by the Canadian Real Estate Association (CREA) and identify real estate professionals who are members of CREA (REALTOR®, REALTORS®) and/or the quality of services they provide (MLS®, Multiple Listing Service®)

Listing information last updated on March 14th, 2025 at 5:32pm MDT